

Conducting a Security Vulnerability Assessment



**MARGOLIS HEALY
& ASSOCIATES**
SOLUTIONS FOR SAFE CAMPUSES

www.margolis-healy.com

Agenda

- Introductions
- Definitions
- Why an Assessment
- Methodology

Definitions

- Vulnerability: the state of being exposed or susceptible to harm or injury
- Vulnerability Assessment: ongoing, critical evaluation to identify potential risks and areas of weakness that could have adverse consequences for institutions and their systems

Definitions

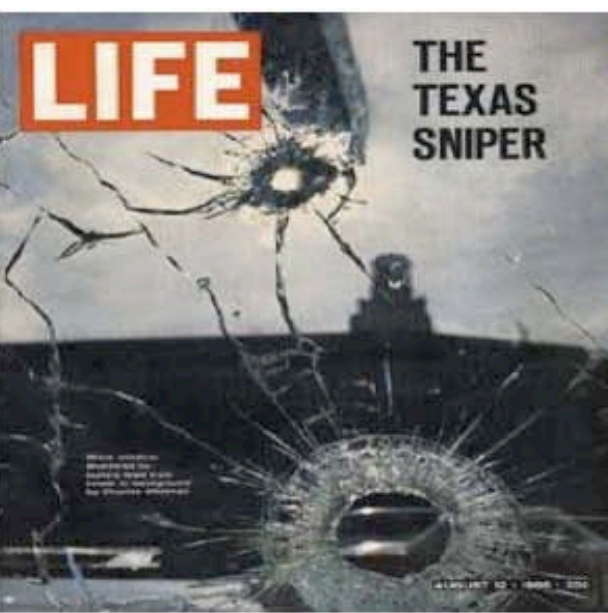
- Hazards Assessment: focuses on general hazards to determine what hazards you might be prone to.
- Risk Analysis: focuses on risk levels and consequences

Why An Assessment

- The Campus Landscape
- Legal Obligations
 - ✓ Case Law
- Post Incident Reports
 - ✓ Most notably those from institutions, state and Federal gov't, & professional associations

Campus Safety Landscape

- High-risk drinking
- Illegal and prescription drug use and abuse
- Violence
 - VAW
 - Criminal intrusions, including rampage shooters
- Natural disasters
- Fire and life safety
- Mental illness and suicide
- Food poisoning, food-borne illness, pandemic
- Terrorist threats



LIFE

THE TEXAS SNIPER

ONAL SATURDAY, OCTOBER 14, 2006

Vermont Student's Body Is Found

By PAM BELLUCK

Chief Tremblay said Ms. Gardner-Quinn's death was a homicide, and he identified Brian Rooney, 36, of Dickwood as a "very likely suspect"

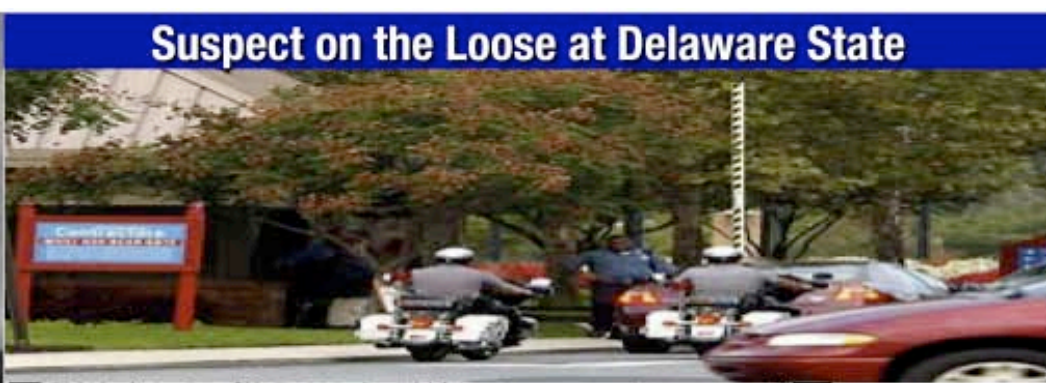
A University of Vermont student who had been missing since last

The Washington Post

NORTHERN VIRGINIA

SHOOTING RAMPAGE AT VIRGINIA TECH

Gunman Kills 32 at Virginia Tech In Deadliest Shooting in U.S. History



Suspect on the Loose at Delaware State

The gunman who fatally shot five students before Northern Illinois University lecture hall, likely planned at least a week in advance, investigators said today



NIU Shooting

NIU students look at flowers, candles, and small notes that sit in the snow Friday, Feb. 15, 2008, on the campus of Northern Illinois University near Cole Hall, the scene where a lone gunman shot and killed six Thursday on the NIU in DeKalb, Ill. (Nam Y. Huh/AP Photo) *Mina Divino*

The New York Times

U.S. ATTACKED

HIJACKED JETS DESTROY TWIN TOWERS AND HIT PENTAGON IN DAY OF TERROR

9. CREEPY IN WASHIN
The Bush Presidency
The Current Safety



President Vows to Exact Punishment for 'Evil'

President Bush vowed to exact punishment for the "evil" that struck the United States on Sept. 11, saying the nation would not be intimidated by the attacks. He said the United States would continue to lead the world in the fight against terrorism.

College students' killer to be executed

DEATH PENALTY

College shooter's deadly rampage baffles friends

Kazmierczak, 27, stopped taking meds; police search for girlfriend

The Wisconsin Post

NATIONAL NEWS

Tuesday, December 4, 2007

8 Are Slain, 5 Wounded by Gunman at Omaha Mall

250 Die as Siege at a Russian School Ends in Chaos



UI Flood Recovery Information

Legal Obligations

- You own/control premises
- You operate programs, on and off campus
- You have “special relationships” with students
- Laws and regulations

Mullins v. Pine Manor College

- 1983 case involving an assault on a female student on campus by a non-student assailant
 - ✓ Massachusetts Supreme Court found the college liable for negligent security.
- "Parents, students and the general community still have a reasonable expectation, fostered in part by the colleges themselves, that reasonable care will be exercised to protect resident students from foreseeable harm."

After-Action Reports

- More than 20 state reports following Virginia Tech tragedy
 - ✓ VT Report, State of Florida, California
- Report to the President
- Several professional association reports
 - ✓ Notably National Association of Attorneys General; IACLEA Blueprint

After-Action Reports

- These reports all recommended institutions conduct a risk or vulnerability, assessment:

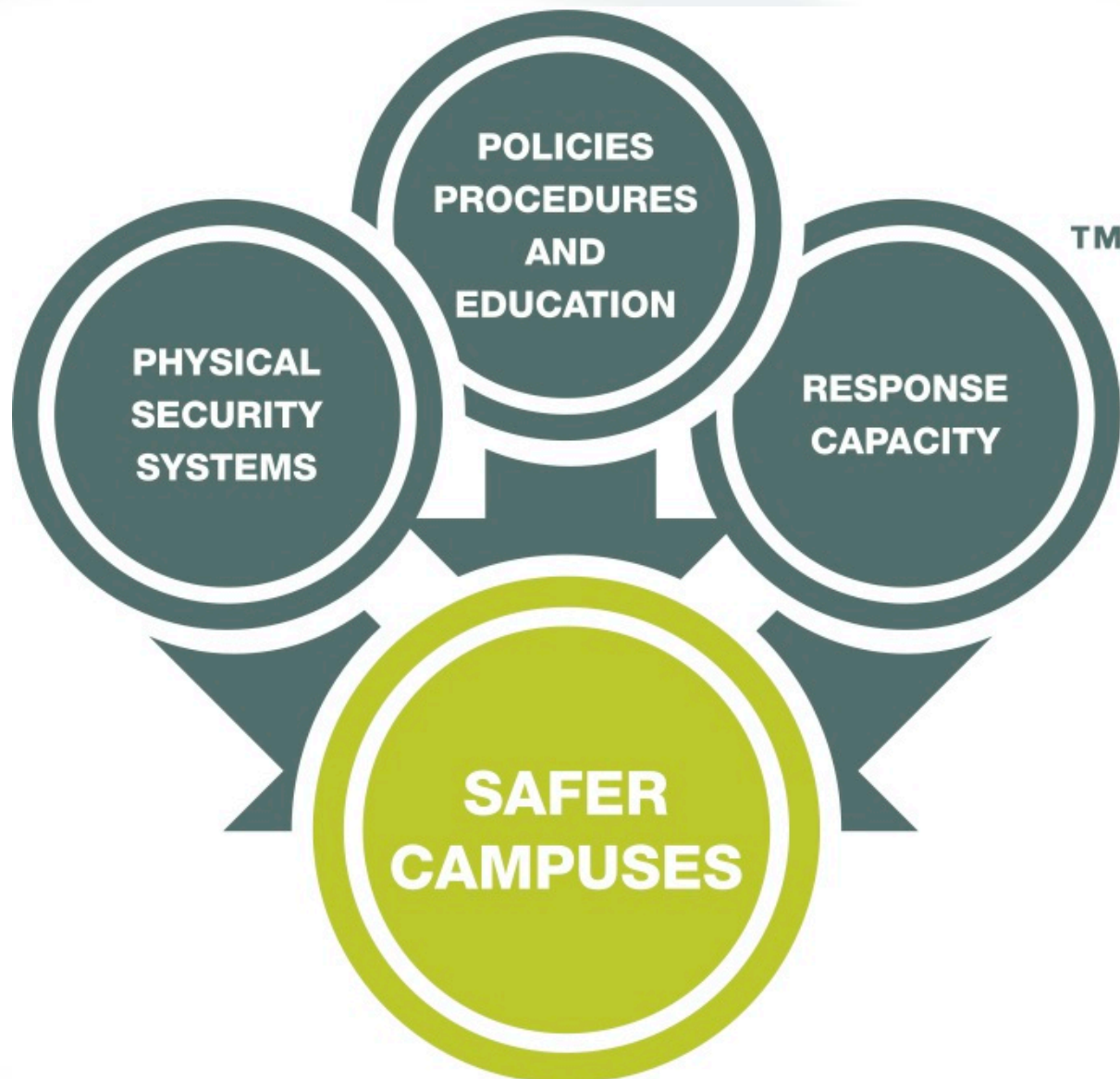
“...each college and university (should) conduct a critical infrastructure assessment using trained security specialists.” (Florida Gubernatorial Task Force for University Campus Safety)

Organizational Framework

FEMA's 4 Phases of Emergency Management



Methodology



Environment Scan

- Internal assessment
 - ✓ ID critical infrastructure and other facilities
 - ✓ ID perceived threats and vulnerabilities from key constituents (remember Law of Diminishing Returns)
 - ✓ Catalog findings (threats to people, property, natural acts, terrorism)

Environment Scan

- External assessment
 - ✓ Crime on/around campus – reported and unreported
 - ✧ Perception of safety/fear of crime
 - ✧ Crime in local area
 - ✓ AOD issues
 - ✓ VAW

Physical Security Systems

- Review campus physical security systems
 - ✓ Perimeter – fence or other boundary, cameras
 - ✓ Building Perimeter - access control, cameras
 - ✓ Interior – intrusion alarms, panic/duress alarms, cameras

Policies, Procedures & Education

- Human Resources
- Residential Living
- Workplace Violence
- Training and Awareness
- Violence Against Women Prevention Policies
- Drugs, Alcohol and Weapons
- Access Control
- EAP

Response Capacity

- Campus public safety entity
- All Hazards Emergency Management – Concept of Operations
 - ✓ Evacuation
- Mass, Emergency Notification & Timely Warning
- MOU/MOA

Risk=VCT

- Vulnerability
- Consequence
- Threat



125

Justifying the Assessment

- ROI
- Avoiding Hyperbole
- Advocating for All Hazards

4 C's

- Collaborate
- Communicate
- Coordinate
- Capitalize

Contact

www.Margolis-Healy.com

shealy@margolis-healy.com

gmargolis@margolis-healy.com

1-866-817-5817